



# Hornsea Project Four

## Predator eradication island suitability assessment: Bailiwick of Guernsey (tracked)

**Deadline: 5, Date: 20 June 2022**

**Document Reference: G1.33**

**Revision: 02**

**Prepared** GoBe consultants, June 2022  
**Checked** Dr Sarah Randall, Orsted, June 2022  
**Accepted** Francesca De Vita, Orsted, June 2022  
**Approved** Dr Julian Carolan, Orsted, June 2022

G1.33  
Ver. B

### Revision Summary

<i>Rev</i>	<i>Date</i>	<i>Prepared by</i>	<i>Checked by</i>	<i>Approved by</i>
01	03/03/2022	GoBe Consultants Ltd, March 2022	Sarah Randall, Orsted, March 2022	Julian Carolan, Orsted, March 2022
02	20/06/2022	GoBe Consultants Ltd, June 2022	Sarah Randall, Orsted, June 2022	Julian Carolan, Orsted, June 2022

### Revision Change Log

<i>Rev</i>	<i>Page</i>	<i>Section</i>	<i>Description</i>
01	-	-	First submission at Deadline 1.
02	Amended throughout	Amended throughout	Update and clarification of approach for delivery of compensation.
02	8	1.1.1.6	Amended footnote number 2 in-text to superscript font, amended footnote font to Orsted font.
02	10	2.1.1.2	Additional reference on guillemot nesting densities added.
02	Amended throughout Section 3	3	Updates to nesting space estimates for additional locations following availability of new photographic evidence.
02	15	3.3.1.1	Paragraph was rephrased to clarify "full island". Further information on photographic coverage for each island was also included.
02	16	3.3.2.1	Text has been added to clarify choice of multiplication factor of two. Text has also been amended to clarify identification of ledges and platforms from photographs.
02	22 - 24	3.4.4; 3.4.5; 3.4.9; 3.4.10	Provided clarification in the text relating to estimated nesting habitat to confirm that estimates of birds are pairs, rather than individuals.
02	35	5.1.1.1	Clarified text around data collection on rat access to potential breeding ledges.

# Table of Contents

1	Background.....	8
2	Guillemot nest habitat requirements.....	10
3	Candidate locations for predator eradication.....	11
3.2	Bailiwick of Guernsey.....	11
3.2.2	Preliminary site visits.....	11
3.3	Potential nesting space following eradication.....	15
3.3.2	Methodology.....	16
3.3.3	Nesting space estimates.....	20
3.3.4	Assumptions and limitations.....	20
3.4	Location discussions.....	21
3.4.2	Alderney – Burhou.....	21
3.4.3	Alderney – Coque Lihou.....	22
3.4.4	Alderney – Fourquie.....	22
3.4.5	Alderney – La Nache.....	22
3.4.6	Alderney – Le Puits Jervais.....	23
3.4.7	Alderney – Hanaine Bay stack.....	23
3.4.8	Alderney – Rousset.....	23
3.4.9	Alderney – L’Etac de la Quoire.....	23
3.4.10	Guernsey – Jethou and Grande Fauconniere.....	24
3.4.11	Guernsey - Herm (SW).....	24
3.4.12	Guernsey – The Humps.....	26
3.4.13	Sark – Grand Moie and Petite Moie.....	27
3.4.14	Sark – Les Autelets.....	29
3.4.15	Sark – L’Etac de Sark.....	31
3.4.16	Sark – Little Sark.....	33
3.4.17	Summary table.....	33
4	Improving predator eradication success.....	35
4.2	Artificial ground cover.....	35
4.3	Decoys and playbacks.....	35
4.4	Simulated guano.....	35
4.5	Invasive plant removal.....	35
5	Next steps – predator eradication implementation study.....	35
6	References.....	37
	Appendix A Nesting space images.....	40

## Appendices

Appendix	Heading
A	Nesting Space Images

## List of Tables

Table 1: Tide height (in m relative to mean sea level), wave height and height from bottom of cliff unsuitable for nesting. Height from bottom of the cliff unsuitable for nesting was calculated as wave height + tide height + 2 m (Harris et al. 1997)..... 16

Table 2: Total island height, tide height and visible vertical area (height) on island photographs that is unsuitable for nesting. Tide height is shown as meters above mean sea level (i.e. relative to Ordnance Datum). ..... 17

Table 3: Total island height (highest point in metres above sea level), tide height at time of photograph (shown as meters above mean sea level), and height visible when island photographs were taken, taken into account the vertical area covered by the tide at the time of photographing. .... 17

Table 4: Island height and their sources for selected islets within the Bailiwick of Guernsey. Heights were assumed to be above sea level unless otherwise stated in the source. .... 17

Table 5: Nesting space estimates for the Channel Islands which were photographed during preliminary site visits. These estimates do not take potential competition with other breeding seabirds into consideration. .... 20

Table 6: Table summarising island characteristics relevant for predator eradication site selection. 34

## List of Figures

Figure 1: Islands of the Bailiwick of Guernsey. .... 13

Figure 2: The Humps, Herm. .... 14

Figure 3: Example of island photograph with superimposed 5 m grid. .... 18

Figure 4: Example of island photograph with superimposed 5 m grid - cropped to show only the area suitable for breeding. The area unsuitable for breeding due to tide and waves (in this example 6.1 m in height) was cropped from the image. .... 18

Figure 5: Example of ledges marked as potentially suitable nesting space (pink). 5m measurement grid shown in black. .... 19

Figure 6: Southwest Herm. .... 26

Figure 7: Islets within The Humps. .... 27

Figure 8: Potentially suitable Guillemot breeding sites (pink) on Grand Moie..... 28

Figure 9: Grand Moie. Source: Google Earth [Accessed November 2021]. .... 29

Figure 10: Les Autelets. .... 30

Figure 11: Suitable cliff habitat for guillemot nesting on Les Autelets. Based on inference of dimensions of the islet on Google Earth, platform A, B and C are approximately 12m<sup>2</sup>, 1m<sup>2</sup> and 0.6m<sup>2</sup> in size. In total, this section of Les Autelets could provide habitat for 272 guillemot (based on a breeding density of 20 birds/m<sup>2</sup>). .... 31

Figure 12: Potentially suitable guillemot breeding sites (denoted by the pink lines) on L'Etac de Sark. .... 32

Figure 13: Potentially suitable guillemot breeding sites (denoted by the pink lines) on a section of L'Etac de Sark ..... 32

# Glossary

Term	Definition
Compensation/compensatory measures	If an Adverse Effect on the Integrity on a designated site is determined during the Secretary of State's Appropriate Assessment, compensatory measures for the impacted site (and relevant features) will be required. The term compensatory measures is not defined in the Habitats Regulations. Compensatory measures are however, considered to comprise those measures which are independent of the project, including any associated mitigation measures, and are intended to offset the negative effects of the plan or project so that the overall ecological coherence of the national site network is maintained.
DCO (Development Consent Order)	An order made under the Planning Act 2008 granting development consent for one or more Nationally Significant Infrastructure Projects (NSIP).
Environmental Impact Assessment (EIA)	A statutory process by which certain planned projects must be assessed before a formal decision to proceed can be made. It involves the collection and consideration of environmental information, which fulfils the assessment requirements of the EIA Directive and EIA Regulations, including the publication of an Environmental Impact Assessment (EIA) Report.
Habitat Regulations	The Conservation of Habitats and Species Regulations 2017 and the Conservation of Offshore Marine Habitats and Species Regulations 2017.
Habitats Regulations Assessment (HRA)	A process which helps determine likely significant effects and (where appropriate) assesses adverse impacts on the integrity of European/national site network sites. The process consists of up to four stages: screening, appropriate assessment, assessment of alternative solutions and assessment of imperative reasons of over-riding public interest (IROPI) and compensatory measures.
Hornsea Four/ Hornsea Project Four Offshore Wind Farm	The term covers all elements of the project (i.e. both the offshore and onshore). Hornsea Four infrastructure will include offshore generating stations (wind turbines), electrical export cables to landfall, and connection to the electricity transmission network.

# Acronyms

Term	Definition
AEoI	Adverse Effect on Integrity
DCO	Development Consent Order
EIA	Environmental Impact Assessment
ES	Environmental Statement
FFC	Flamborough and Filey Coast
HRA	Habitats Regulations Assessment
IROPI	Imperative reasons of overriding public interest
NE	<a href="#">Natural England</a>
NSIP	Nationally Significant Infrastructure Projects
PINS	Planning Inspectorate
RIAA	Report to Inform Appropriate Assessment
SPA	Special Protection Area

# Units

Unit	Definition
km	Kilometre
km <sup>2</sup>	Square-kilometre
m	Metre
m <sup>2</sup>	Square-metre

## 1 Background

- 1.1.1.1 Orsted Hornsea Project Four Limited (hereafter the 'Applicant') is proposing to develop Hornsea Project Four Offshore Wind Farm (hereafter 'Hornsea Four'). Hornsea Four will be located approximately 69 km offshore of East Riding of Yorkshire in the Southern North Sea and will be the fourth project to be developed in the former Hornsea Zone.
- 1.1.1.2 The Applicant has submitted an application for a Development Consent Order (DCO) to the Planning Inspectorate (PINS), supported by a range of plans and documents including an Environmental Statement (ES) which sets out the results of the Environmental Impact Assessment (EIA). The Applicant has also submitted a Report to Inform Appropriate Assessment (RIAA) ([Revision 3 of B2.2: Report to Inform Appropriate Assessment](#)) [updated revision to be submitted at Deadline 5](#)) which sets out the information necessary for the competent authority to undertake a Habitats Regulations Assessment (HRA) to determine if there is any Adverse Effect on Integrity (AEol) of the national site network.
- 1.1.1.3 The Habitats Regulations<sup>1</sup> acknowledges that there may be imperative reasons of overriding public interest for some plans and projects to proceed, i.e., the public gain from the plan or project can outweigh the possible harm to a European site, provided that harm is adequately compensated. The Regulations provides a derogation under Article 6(4) that allows projects that may have an AEol to be consented ("the HRA Derogation Provisions").
- 1.1.1.4 Hornsea Four have submitted a "without prejudice derogation case" which forms part of the Application. Its purpose is to provide, without prejudice, information to demonstrate that the derogation tests could be met for Hornsea Four if it is necessary to apply them to authorise the project.
- 1.1.1.5 The ~~Gannet~~, Guillemot and Razorbill Compensation Plan ([B2.8.3 Gannet; Guillemot and Razorbill Compensation Plan](#)) sets out ~~'without prejudice'~~ compensation measures for Hornsea Four for common guillemot *Uria aalge* (hereafter referred to as guillemot); ~~and razorbill *Alca torda* and northern gannet *Morus bassanus*~~ associated with the Flamborough and Filey Coast (FFC) Special Protection Area (SPA). One of the proposed compensation measures is the removal of invasive predators at chosen sites to achieve an improvement in guillemot and/or razorbill population numbers ~~through the removal or reduction of predation pressures~~.
- 1.1.1.6 ~~The Compensation measure for FFC SPA: Overview document (Volume B2, Chapter 6: Compensation measures for FFC SPA: Overview)~~ presents the Applicant's estimated impact for guillemot and razorbill. ~~For guillemot, 35.05 adult birds (per annum) are predicted to suffer mortality as a result of displacement for the Hornsea Four. For razorbill, the impact is estimated to be 1.5 adult birds (per annum). The compensation population (in pairs of birds) required to compensate for the effect 162 pairs and 11 pairs for guillemot and razorbill respectively<sup>2</sup>.~~
- 1.1.1.7 The ecological evidence and plans for predator eradication are discussed in detail in [B2.8.3: Compensation measures for FFC SPA: Predator Eradication: Ecological Evidence \(APP-196\)](#) of the Applicant's DCO submission. An internal short-listing of candidate sites for predator eradication was undertaken in quarter three of 2021 where 63 UK candidate sites were identified. Sites unsuitable for predator eradication were not considered further. Reasons for removing islands from the list included lack of stakeholder support, predators not being present, eradication programmes already having been planned or undertaken, large human

<sup>1</sup> <https://www.legislation.gov.uk/ukxi/2017/1012/contents/made>

<sup>2</sup> ~~Compensation population determined by Orsted in preparation report entitled: Calculation Methods of Hornsea Four's Proposed Compensation Measures for Features of the FFC SPA.~~



populations, and predators not being considered a limiting factor to guillemot and razorbill populations. The following locations made the short list and were consulted on as part of the pre-application compensation measures consultation:

- Channel Islands – Bailiwick of Guernsey:
  - ◉ Alderney: A number of islands/ islets around the main island;
  - ◉ Herm: Including Herm, The Humps and Jethou (plus other smaller islets); and
  - ◉ Sark: A number of islands/ islets around the main island.
- Isles of Scilly: A number of islands/ islets;
- Rathlin Island; and
- Several islands/ islets along the south coast of England.

1.1.1.8 Following preliminary site visits, further refinement and ~~short-listing~~ shortlisting of potential locations has taken place. Rathlin Island has secured partial LIFE funding for an eradication project and is therefore not being considered further at this time. There ~~was~~ is currently a lack of available evidence in support of an eradication on the Isles of Scilly or the locations along the south coast of England for the benefit of guillemot and razorbill. Therefore, ~~this location was~~ these locations were also removed from further consideration ~~at this time~~. The Bailiwick of Guernsey (Alderney, The Humps, Sark and associated islands and islets of each) is the preferred location for predator eradication and therefore the focus of this document.

1.1.1.9 Next steps for the implementation of predator eradication ~~and/or control~~, as a 'without prejudice' compensation measure for Hornsea Four, are outlined in **B2.8.4: Compensation Measures for FFC SPA: Predator Eradication: Roadmap: (REP2-012)**. In summary, site selection (which this work forms part of), predator surveys and habitat surveys ~~are scheduled~~ have been undertaken during 2021 and will continue into 2022, with anticipated granting of the Hornsea Four DCO in 2023, and implementation of compensation from 2023/2024 onwards. Further information in relation to the Applicant's predator surveys and seabird census is presented within G5.4 Predator Eradication Implementation Update (submitted at Deadline 5).

1.1.1.10 Following the production of the ~~roadmap~~ first revision of the Roadmap (REP2-012) and **B2.8.3: Compensation measures for FFC SPA: Predator Eradication: Ecological Evidence; (APP-196)**, initial site visits and stakeholder engagement ~~have~~ has been ~~carried out~~ undertaken and ~~plans for feasibility studies have~~ a predator eradication implementation study has been developed with surveys underway (for the Bailiwick of Guernsey (Alderney, The Humps, Sark and associated islands and islets of each)). This Predator Eradication Island Suitability Assessment has been informed by and is also contributing to the implementation studies. Full details of the implementation studies are provided within the latest revision of the aforementioned Roadmap (2.8.4: Compensation measures for FFC SPA: Predator Eradication: Roadmap (REP2-012)) and the G5.4 Predator Eradication Implementation Update (submitted at Deadline 5).

1.1.1.11 This document provides a summary of relevant work on the predator eradication compensation measure, completed since the production of **B2.8.3: Compensation measures for FFC SPA: Predator Eradication: Ecological Evidence (APP-196)** of the Applicant's DCO submission. Specifically, this document:

- Provides background on guillemot nesting requirements (noting that due to the difficulty in determining nesting cervices from photographs and the low number of razorbill required (~~11~~ 12 pairs) it has been assumed with confidence that the compensation population of both species can easily be achieved at Alderney. Further detail is provided in the following sections).

- Discusses follow-on work, including a summary of preliminary site visits, carried out by the Applicant to select suitable candidate islands for predator eradication to benefit guillemot.
- Provides a preliminary well-informed estimate of nesting space available to guillemot following a predator eradication project in the Bailiwick of Guernsey.
- Outlines the ~~feasibility studies~~ predator eradication implementation study which will form the next step in the process of delivering predator eradication to benefit guillemot and razorbill.

1.1.1.12 This report focuses on the suitability of selected islands/islets for predator eradication to benefit guillemot. Whilst razorbill is not included explicitly here, they are also a target species for 'without prejudice' compensation through predator eradication. Guillemot and razorbill nest in broadly similar habitat types and share colony space (Harris and Wanless, 1987), although razorbill show a preference for nesting in cavities and crevices as well as nesting on ledges (Plumb, 1965; Hipfner and Dussureault, 2001). This makes the visual estimation of full potential nest-site availability from whole-island photographs, as conducted in this report, unfeasible for razorbill (as the current images do not allow cervices to be identified). However, as low numbers are required for razorbill compensation (~~1112~~ pairs), and a multitude of cavities and crevices will be available in addition to the guillemot/razorbill ledges identified in this report, it is reasonable to assume that any sites identified as potential candidate breeding sites for guillemot will also provide more than sufficient additional cavity/crevice breeding space for the required razorbill compensation.

## 2 Guillemot nest habitat requirements

- 2.1.1.1 The guillemot (*Uria aalge*) is a colonial, sea-cliff nesting species found in the North Atlantic and Pacific (Harris and Birkhead, 1985). The species is widespread along the British and Irish coasts (Balmer *et al.*, 2013).
- 2.1.1.2 Guillemot breed at varying, often high, densities on ledges, in cliff niches, among boulders or on rock platforms (Harris *et al.*, 1996). ~~Densities as high as 46 pairs/m<sup>2</sup> have been reported (Harris and Wanless, 1987).~~ In the book "The Atlantic ~~Aleidae~~ Acidae", Harris and Birkhead (1985) state that guillemot breed at densities of around 20 pairs/m<sup>2</sup>. Much higher densities, such as 46 pairs/m<sup>2</sup> (Harris and Wanless, 1987) and 70 pairs/m<sup>2</sup> (Birkhead, 2010) have also been reported.
- 2.1.1.3 Guillemots nest from the top of cliffs down to two meters above wave height at high tide and appear to show a preference for sites further away from cliff tops, sites that slope inwards and sites that have walls (Harris *et al.*, 1997).
- 2.1.1.4 They can nest on ledges that are substantially sloped, with slopes recorded to vary "from +50° (sloping down, outwards) to -30° (sloping inwards)", but generally place their eggs on spots that are almost completely level (+5° to -5°) (Harris *et al.*, 1997). Birds show a

preference for breeding next to conspecifics, and new breeders generally join existing sub-colonies (Birkhead, 1977; Harris *et al.*, 1997).

- 2.1.1.5 On seabird islands, Heaney and St Pierre (2017) noted that guillemot were also found to nest under boulders and on ledges in cavities, potentially related to high predation pressure and/or the absence of preferred ledges.

### 3 Candidate locations for predator eradication

- 3.1.1.1 The following locations within the Bailiwick of Guernsey were identified as being potentially suitable for a predator eradication project:

- Alderney: A number of islands/ islets around the main island;
- Herm: Including Herm, The Humps ~~and~~ Grande Fauconniere ~~(near and~~ Jethou); and
- Sark: A number of islands/ islets around the main island.

- 3.1.1.2 ~~Below, habitat~~Habitat suitability, potential predator presence and local guillemot populations are discussed ~~below~~ for the Bailiwick of Guernsey. Where preliminary site visits were carried out during August 2021, summary findings from those visits are also included. Estimates of potential nesting space availability after rat eradication for those islands for which sufficient photographic evidence was available has also been presented.

3.1.1.3 In line with recent Natural England advice, evidence collected by the Applicant, and support by Alderney Wildlife Trust and eradication experts, the Applicant is considering islands and islets within 500m of the coast of Alderney, Herm and Sark (in addition to islands and islets beyond this distance), due to benefits associated with predator eradication (or significant predator population suppression if natural reinvasion occurs and could not be re-eradicated) to a wide range of seabird species, including but not limited to guillemot and razorbill.

3.1.1.4 Risk of rodenticide resistance during the compensation measure will be managed with the use of kill traps (such as the Goodnature A24) which operate without the use of rodenticide.

### 3.2 Bailiwick of Guernsey

- 3.2.1.1 The Bailiwick of Guernsey is part of the Channel Islands, located in the English Channel, off the coast of Normandy. The Channel Islands are comprised of seven inhabited islands in the Bailiwick of Jersey (Jersey) and the Bailiwick of Guernsey (Guernsey, Herm, Jethou, Sark, Alderney, and Brecqhou), as well as a range of smaller uninhabited islands/ islets. The two Bailiwicks are separate institutions, this document focuses on the Bailiwick of Guernsey only.

- 3.2.1.2 Many of the islands in the Bailiwick of Guernsey have some suitable nesting habitats for seabirds, although evidence collected to date suggests it is lacking in availability for guillemot and razorbill. Unpublished data from the Alderney Wildlife Trust and Bailiwick of Guernsey (*pers. comm.*, 2021) show that guillemot nest on Longue Pierre (Herm – The Humps), Les Autelets (Sark) and Little Sark (Sark), as well as on Coque Lihou, Fourquie, La Nache and Les Etacs (all islets around Alderney). As guillemot and razorbill already breed on islands within the Bailiwick of Guernsey this suggest that there is a nearby potential source population from which birds could be recruited from ~~nearby islands~~ following rat eradication.

### 3.2.2 Preliminary site visits

- 3.2.2.1 Preliminary site visits to the Bailiwick of Guernsey were carried out in August 2021 to ~~identify~~study the ~~feasibility~~implementation of a ~~rat~~predator eradication ~~exercise~~ for the potential benefits to guillemot and razorbill breeding populations (Figure 1 and Figure 2). The aim of the site visits was to see and assess the following ~~initial~~ locations, as they contain

potentially suitable guillemot and razorbill breeding habitats, and have vegetation to support rats over winter:

- Herm: southwest of the island;
- Jethou; and Grande Fauconniere;
- The Humps; and
- Sark: Les Autelets, Grand Moie, Little Sark (South Sark) and L'Etac de Sark.

3.2.2.2 However, weather restrictions and logistical issues meant that The Humps, Les Autelets, SW Herm and Little Sark were not visited on foot or photographed by boat.

3.2.2.3 Alderney was not included in the preliminary site visits, but images of the following selected candidate sites were obtained from the Alderney Wildlife Trust:

- La Nache;
- Fourquie; and
- L'Etac de la Quoire.

3.2.2.4 For those islands, Alderney Wildlife Trust provided their expert opinion on areas deemed suitable for guillemot and razorbill nesting by highlighting potential breeding areas on the provided images (see [Appendix A](#)). In addition, information was provided by Alderney Wildlife Trust regarding rats and rat eradication on the islands and stacks of Burhou, Coque Lihou, Le Puits Jervais, Hanaine Bay stack and Rousset. Whilst insufficient data were available to provide nest estimates from photographs, the sites are discussed in [Section 3.4](#) with estimates of potential nesting space provided by Alderney Wildlife Trust (*pers. comm.*, 2021) or estimates based on images from the internet or Google Earth, where possible.

3.2.2.5 Other locations, namely Petite Moie, Burons and La Grune and Bec du Nez, have subsequently been added to the process as information from the eradication implementation study and stakeholder engagement has conveyed other suitable locations for consideration. These locations were included within the Applicant's 2022 seabird census, with results presented within [Table 6](#). Further information in relation to the Applicant's seabird census is presented within [G5.4 Predator Eradication Implementation Update \(submitted at Deadline 5\)](#).

~~3.2.2.4~~

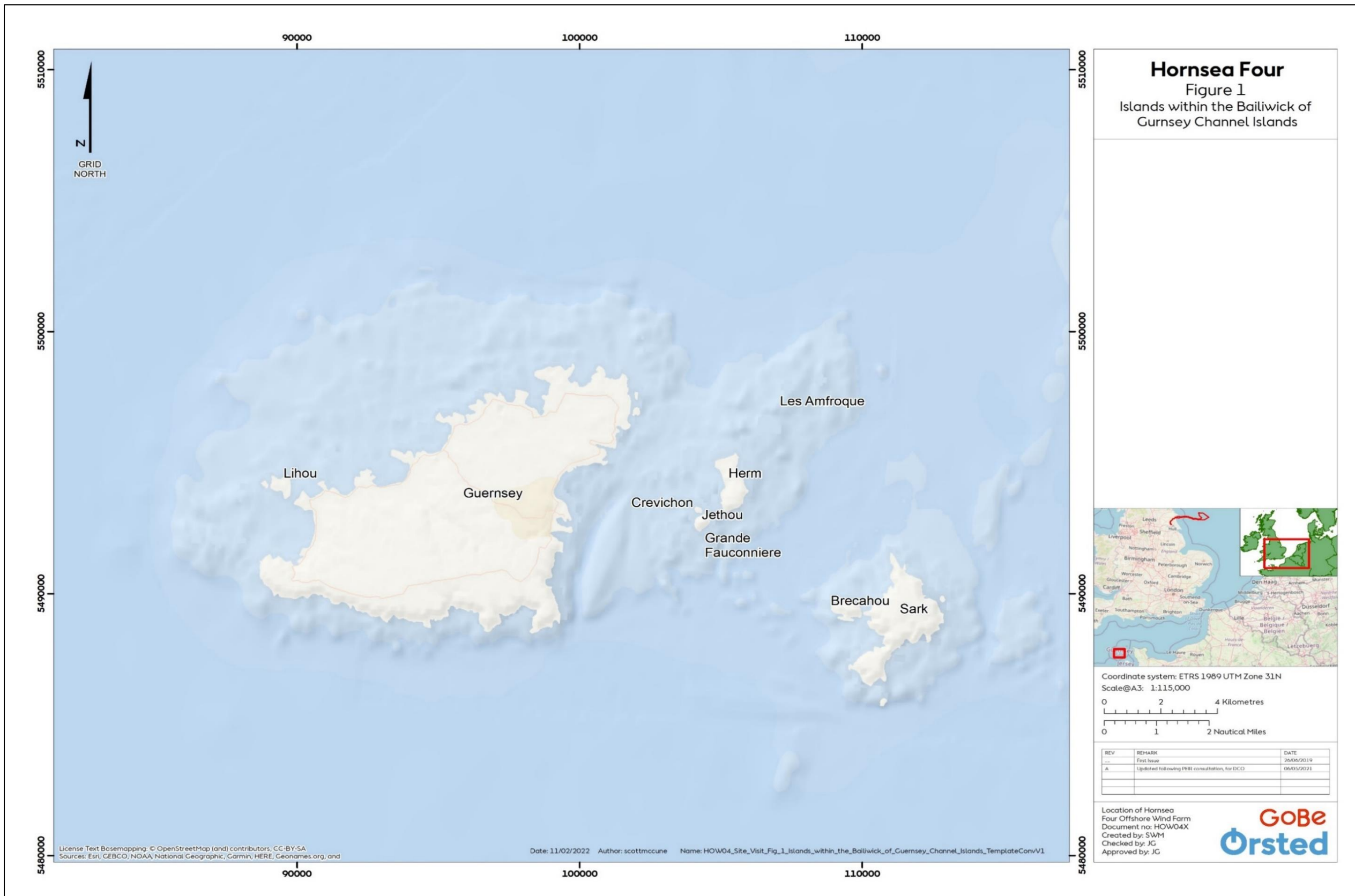
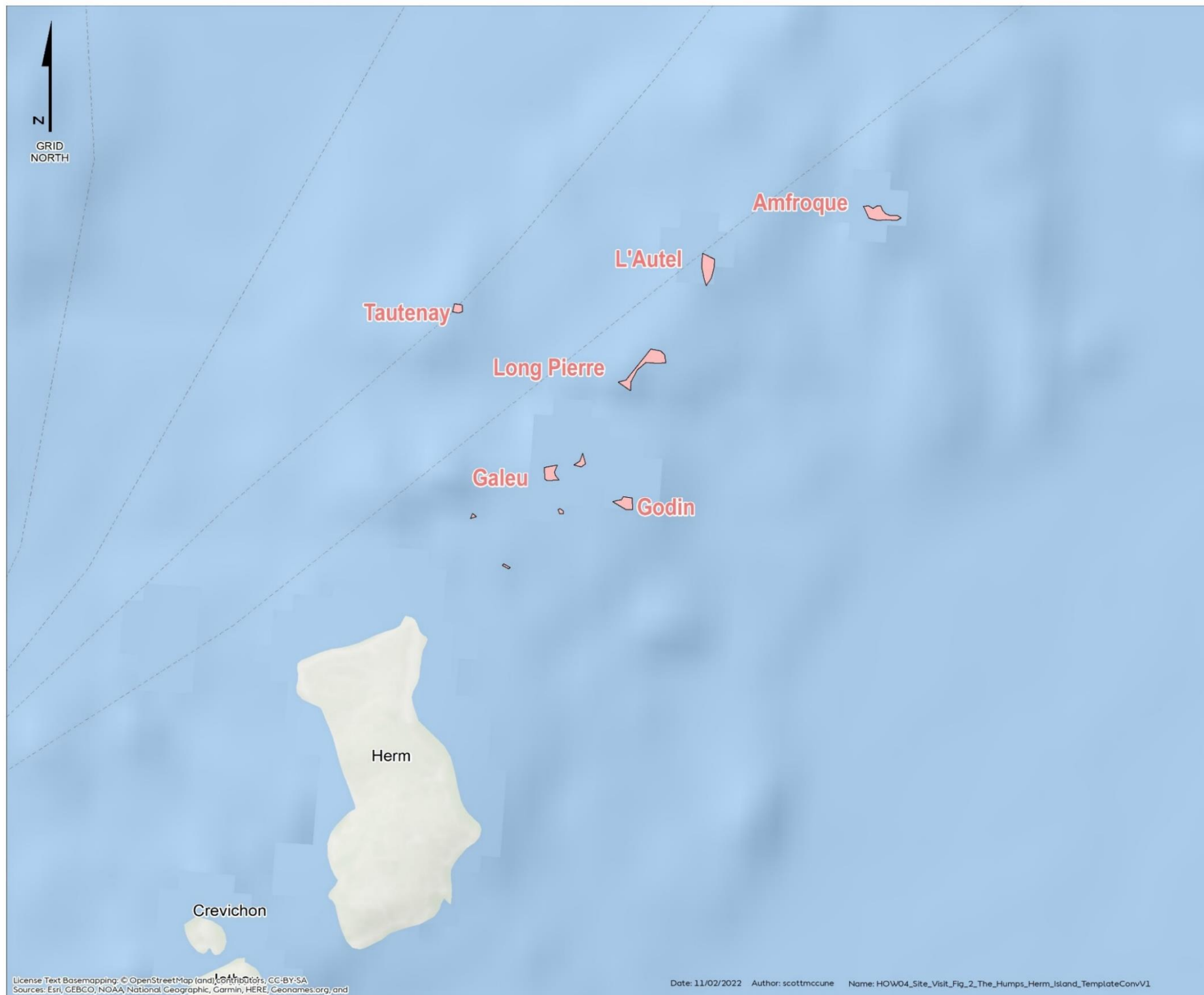


Figure 1: Islands of the Bailiwick of Guernsey.



### Hornsea Four Figure 2 The Humps Archipelago Herm Island

■ The Humps Archipelago

Coordinate system: ETRS 1989 UTM Zone 31N  
 Scale@A3: 1:25,000  
 0 0.5 1 Kilometres  
 0 0.25 0.5 Nautical Miles

REV	REMARK	DATE
...	First Issue	26/06/2019
A	Updated following PRB consultation, for DCO	09/05/2021

Location of Hornsea Four Offshore Wind Farm  
 Document no: HOW04X  
 Created by: SWM  
 Checked by: JG  
 Approved by: JG

Figure 2: The Humps, Herm.



~~3.2.2.5~~3.2.2.6 To summarise, based on the collated information from preliminary site visits and communications with Alderney Wildlife Trust (see [Sections 3.2.2.1 to 3.2.2.4](#)), the final list of islands considered in this report is:

- Alderney:
  - Burhou;
  - Coque Lihou;
  - Fourquie;
  - La Nache;
  - Le Puits Jervais;
  - Hanaine Bay stack;
  - Rousset; and
  - L'Etac de la Quoire.
- Guernsey:
  - Jethou;
  - Grande Fauconniere;
  - Herm (SW); and
  - The Humps.
- Sark:
  - Grand Moie;
  - Les Autelets;
  - L'Etac de Sark;
  - Little Sark;
  - Petite Moie;
  - La Grune and Bec du Nez; and
  - Burons.

### 3.3 Potential nesting space following eradication

3.3.1.1 An estimate of nest-site availability following predator eradication was calculated for those islands and islets of interest for which photographs of the height of the full island (sea level to top of island) were taken (see [Section 3.3](#)) during the site visits or provided by the Alderney Wildlife Trust. These islands are:

- Alderney - L'Etac de la Quoire;
- Alderney - Fourquie;
- Alderney - La Nache; and
- Guernsey - Grande Fauconniere.

~~3.3.1.2~~3.3.1.2 For L'Etac de la Quoire and Grande Fauconniere, a photograph of one side of each island was taken or provided. For both Fourquie and La Nache, two photographs from opposing sides of the island were available.

~~3.3.1.3~~3.3.1.3 Whilst Grand Moie and L'Etac de Sark (both islands off Sark) were photographed, island height data could not be obtained for these sites. As island elevation data is needed to provide scale and information on the vertical area available for nesting (see methodology in [Section 3.3.2](#)), available nest habitat could not be calculated for these islands. Instead, [Section 3.3.2](#) provides an initial estimate, with island photographs included to show potentially suitable ledges.

~~3.3.1.4~~3.3.1.4 For the remainder of the islands, no photographs were available from the initial island site visits to estimate nest site availability. As a result, a collection of smaller islands have been included, with their nesting potential estimated based on expert opinion from photographs gleaned from Google Earth and other locations. Where

necessary and possible, this process will be ground truthed during the predator eradication implementation study. For ~~these~~ these sites, nest site suitability is discussed in Section 3.4.

### 3.3.2 Methodology

3.3.2.1 Nest site availability was estimated using the following methodology:

- 1) Harris et al. 1997 found that guillemot breed from "the top of the cliff down to 2 m above normal wave height at high tide". The height from the bottom of the cliff unavailable for nesting was calculated and identified on island photographs, and potential nesting sites estimated, using the following steps:
- 2) Tide height (Mean High Water Springs) was obtained from the National Tidal and Sea Level Facility website<sup>3</sup> for the nearest tidal gauge to the islands, located at St Helier (Jersey). Mean High Water Springs at that tidal gauge was 5.12 m (relative to Ordnance Datum, i.e. mean sea level<sup>4</sup>).
- 3) Wave height information was visually derived from the Atlas of UK Marine Renewable Energy Resources<sup>5</sup>. Wave height was 1.55 m (annual mean significant wave height) for the Bailiwick of Guernsey<sup>5</sup>.
- 4) Based on the tide and wave height obtained above, the height from the bottom of the cliff unavailable for nesting was calculated (Table 1)

**Table 1: Tide height (in m relative to mean sea level), wave height and height from bottom of cliff unsuitable for nesting. Height from bottom of the cliff unsuitable for nesting was calculated as wave height + tide height + 2 m (Harris et al. 1997).**

Location	Tide height (m)	Wave height (m)	Height (m) unsuitable for nesting
Bailiwick of Guernsey	5.12	1.55	8.67

- 5) During the preliminary site visits, pictures of the islands of interest were taken. The date- and time-stamp on each island picture was recorded, and the tide height for the date and time at which photograph was taken was then read from the corresponding tide graph on the National Tidal and Sea Level Facility website<sup>3</sup>. This tide height was subtracted from the number calculated in step 3 to obtain the total distance from the bottom of the cliff unavailable for nesting at the time the island photo was taken (see Table 2), thereby taking into account the area of the island already covered by water at the time the photograph was taken.

<sup>3</sup> National Tidal and Sea Level Facility (2021), Real-time data - UK National Tide Gauge Network.

<https://ntslf.org/data/uk-network-real-time>, National Tidal and Sea Level Facility. [Accessed October 2021].

<sup>4</sup> About Chart Datum & Ordnance datum: National Tidal and Sea Level Facility: <https://ntslf.org/tides/datum> [Accessed November 2021].

<sup>5</sup> Atlas of UK Marine Renewable Energy Resources (2008). <http://www.renewables-atlas.info/>, ABPmer, [Accessed October 2021].



**Table 2: Total island height, tide height and visible vertical area (height) on island photographs that is unsuitable for nesting. Tide height is shown as meters above mean sea level (i.e. relative to Ordnance Datum).**

Island	Total height (m) unsuitable for nesting	Tide height (m) at time of photograph	Visible vertical area (m) unsuitable for nesting
L'Etac de la Quoire	8.67	1.62	7.05
Fourquie	8.67	2.92	5.75
La Nache	8.67	0.22	8.45
Grande Fauconniere	8.67	-2.1	10.77

- 6) Island height information (highest point on each island in meters above sea level, **Table 3**) was obtained, and the height of the island visible in the photograph was then calculated by subtracting the tide height at the time the photograph was taken. Island heights for the Bailiwick of Guernsey were therefore obtained, where available, from various sources through an internet search (sources detailed in **Table 4**).

**Table 3: Total island height (highest point in metres above sea level), tide height at time of photograph (shown as meters above mean sea level), and height visible when island photographs were taken, taken into account the vertical area covered by the tide at the time of photographing.**

Island	Height (m)	Tide height (m) at time of photograph	Visible height of island (m)
Alderney – L'Etac de la Quoire*	NA	NA	21
Alderney – Fourquie	37.9	5.75	32.2
Alderney – La Nache	49.9	8.45	41.5
Jethou – Grande Fauconniere	36	-2.1	38.1

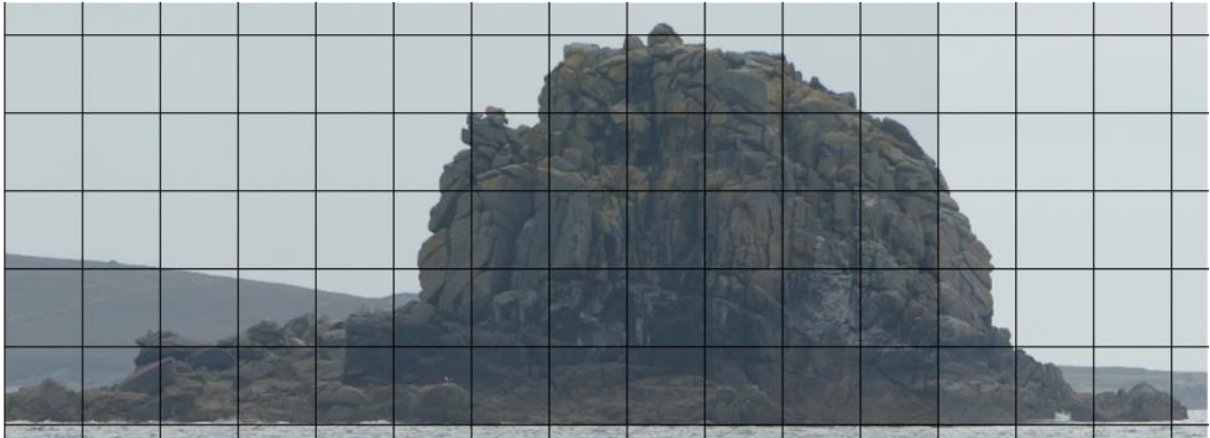
\*For L'Etac de la Quoire island height was derived directly from height markers provided on photos by the Alderney Wildlife Trust.

**Table 4: Island height and their sources for selected islets within the Bailiwick of Guernsey. Heights were assumed to be above sea level unless otherwise stated in the source.**

Island	Height (m)	Source
L'Etac de la Quoire	21	Estimated visually from Alderney Wildlife Trust photographs
Fourquie*	37.9	<a href="https://www.ukclimbing.com/logbook/crags/sister_rocks-11952/">https://www.ukclimbing.com/logbook/crags/sister_rocks-11952/</a>
La Nache*	49.9	<a href="https://www.ukclimbing.com/logbook/crags/sister_rocks-11952/">https://www.ukclimbing.com/logbook/crags/sister_rocks-11952/</a>
Grande Fauconniere	36	<a href="https://www.mudandrout.es/su mmit/grand-fauconniere/">https://www.mudandrout.es/su mmit/grand-fauconniere/</a>

\*Fourquie and La Nache were stated to be 43 and 55 m respectively at high tide, so the tide height of 5.1 m calculated in **Table 1** was subtracted to provide estimated height above sea level.

- 7) Based on the visible island height obtained in **Table 3**, a 5 m measurement grid was superimposed over the photo (see **Figure 3** for an example). Using the measurement grid, the photograph was then cropped to remove the area calculated as unsuitable for nesting (see **Figure 4** for an example).



**Figure 3: Example of island photograph with superimposed 5 m grid.**



**Figure 4: Example of island photograph with superimposed 5 m grid - cropped to show only the area suitable for breeding. The area unsuitable for breeding due to tide and waves (in this example 6.1 m in height) was cropped from the image.**

- 8) Areas visually deemed to match known guillemot nesting preferences were marked on the image of the section of the island accessible for nesting (as obtained in step 6 above). See [Figure 5](#) for an example. Only horizontal ledges clearly visible on either the whole-island photographs or any higher-resolution close-ups were selected. This is a conservative estimate, as short ledges and small rocky areas can also be used, and inclined ledges can be used if flat areas for egg placement are present (Harris *et al.* 1997, see [Section 2](#)).



**Figure 5: Example of ledges marked as potentially suitable nesting space (pink). 5m measurement grid shown in black.**

- 9) A visual estimate of the total length of the marked areas (total ledge length) was made.
- 10) Based on the topography of the cliffs and the width/depth of the ledges as observed during the preliminary site visits, a conservative estimate of an average 0.3 m ledge depth was assumed. This width also aligns well with the published literature, with Birkhead (1977) recording a 0.29 m mean width for ledges occupied by guillemot. Where in instances where photographs clearly showed ~~large~~ larger, flat rock areas ~~(here referred, these locations were deemed to as represent wider nesting "platforms");~~, for which depth was estimated as 0.6 m.
- 11) Whilst guillemot have been known to breed at densities as high as 46 pairs/m<sup>2</sup> (Harris and Wanless, 1987), a conservative estimate of 20 pairs/m<sup>2</sup> (as reported in Harris and Birkhead, 1985) was used. See [Section 2.1.1.1](#) for more information on breeding densities.
- 12) A preliminary estimate of potential number of pairs which could be accommodated by the island following predator eradication was calculated as:

$$\text{Potential nesting space (nr of pairs) on photograph} = \text{Total ledge length (m)} \times \text{ledge depth (0.3 m) and/or platform depth (0.6 m)} \times \text{bird density (20 pairs/m}^2\text{)}$$

- 13) This number was then multiplied by two, on the crude assumption that the remaining areas of the island which are not photographed provide the same amount of nesting habitat as that estimated above:

$$\text{Potential nesting space (nr of pairs) on island} = \text{Total ledge length on photograph (m)} \times \text{ledge depth (0.3 m) and/or platform depth (0.6 m)} \times \text{bird density (20 pairs/m}^2\text{)} \times 2$$

For example, potential nest space for the example image above was estimated as 120 pairs, based on a visual estimate of 10 meters of suitable ledge length (see [Figure 3](#)) and the formula outlined in the methodology ([Section 3.3.2](#)) above:

Total ledge length on photograph (m) x ledge depth (0.3 m) and/or platform depth (0.6 m) x bird density (20 pairs/m<sup>2</sup>) x 2

i.e. For example: 10 x 0.3 x 20 x 2.

Whilst islands do not conform to a two-sided shape, a multiplier of 2 was deemed most appropriate, as photographing a circular/oblong island from two opposing sides would show the majority of the island's coasts. Therefore, for islands photographed from one side, multiplying by 2 would ensure that the calculation represents a conservative approximation of full coverage; a higher multiplication factor would risk over-estimating site availability.

For Forquie and La Nache, photographs of two faces of the cliff were unavailable. For these sites, the estimates were therefore not multiplied by two, i.e. only the formula in [Section 3.3.2.1](#) step 11 was used.

### 3.3.3 Nesting space estimates

3.3.3.1 Conservative nesting space estimates for the assessed islets within the Bailiwick of Guernsey are shown in [Table 5](#). Images with measurement grids and visual nesting space estimates for the islands can be found in [Appendix A](#).

**Table 5: Nesting space estimates for the Channel Islands which were photographed during preliminary site visits. These estimates do not take potential competition with other breeding seabirds into consideration.**

Island	Estimated ledge length (m)	Estimated platform length (m)	Estimated available nesting space (pairs)
<i>Channel Islands</i>			
Alderney – L'Étac de la Quoire	7.5	NA <sup>2</sup>	90
Alderney – Fourquie <sup>1</sup>	19	NA <sup>2</sup>	114
Alderney – La Nache <sup>1</sup>	14	NA <sup>2</sup>	84
Jethou – Grande Fauconniere	2.5	2	78

<sup>1</sup>For Forquie and La Nache, photos of two faces of the cliff were available. For these sites, the estimates were therefore not multiplied by 2, i.e. only the formula in [Section 3.4.3](#) step 11 was used.

<sup>2</sup>No platforms identified in photographs.

### 3.3.4 Assumptions and limitations

3.3.4.1 It is important to note that the numbers above are a preliminary estimate of potentially suitable nesting space. It is based on the information available to date, using visual estimates based on approximate measurement grids, and conservative assumptions on ledge length, width, and available nesting space on the sides of the island not photographed. The dimensions of ledges, platforms and cliffs may, if possible, be recorded with precision, for example by using laser rangefinders.

3.3.4.2 Current use by guillemot and other species could be assessed to understand potential competition for nest sites, as competition could reduce the availability of suitable breeding spaces. However, this is mitigated by the fact that the total number of suitable breeding

sites is expected to be significantly higher than the conservative estimates calculated in this report.

- 3.3.4.3 Many smaller niches and short sections of ledge, not clearly distinguishable on whole-island images, are likely to be available and could provide substantial additional nest habitat. Such sites can be identified as part of on-site visits during follow-up work and are likely to result in an increased nest habitat availability calculation. In addition, Heaney and St Pierre (2017) found that guillemot on the Isles of Scilly can also nest in concealed sites under boulders and on ledges in cavities. Guillemots in the Bailiwick of Guernsey also show this habit (for example, on The Humps), and as a result, substantial additional habitat is likely to be available. The estimates on nest site suitability presented therefore represent a conservative estimate, and the true number of suitable breeding locations is likely to be substantially higher.
- 3.3.4.4 Any outward (to sea) or inward (into cliff) slope could be considered, and flat areas on sloping ledges identified, as guillemots are less likely to nest on sites that slope outward but will nest on sloping ledges where flat areas for egg placement are available (Harris *et al.*, 1997). Only (near-) horizontal ledges from the photographs are included in this estimate; numerous additional nest sites are likely to be available on sloping ledges with horizontal areas for egg placement.
- 3.3.4.5 In addition, further habitat may be available in areas covered by vegetation. Whilst this work focuses on rocky cliff habitat only, there is evidence for guillemot nesting under vegetation cover (Parrish and Paine, 1996). If guillemot nest under vegetation in the Bailiwick of Guernsey, large amounts of additional nesting sites will be available, but further study is needed to confirm whether such nest sites are selected there.
- 3.3.4.6 The estimate of the vertical area of the cliff accessible for nesting is based on nesting preferences on the Isle of May, Scotland (Harris *et al.*, 1997). Additionally, tidal height information was obtained from publicly available data from tidal gauges located at St Helier (Jersey), rather than recorded at the islands of interest. Local tidal height and nesting preferences may differ, so where possible site-specific information on tides and guillemot cliff use could be collected to further improve estimates.
- 3.3.4.7 During the preliminary site visits, some islands were photographed from a moving vessel. When merging photographs from parts of larger islands into a larger full-island pictures, some issues with picture alignment and merging means that some small sections of larger islands were lost from the merged photo.
- 3.3.4.8 This report provides preliminary estimates. A full [feasibility predator eradication implementation](#) study (see [Section 5](#)) with site visits ~~will be undertaken in 2022~~ [is currently underway](#) to confirm, and where necessary refine, the assessments presented in this report.

### **3.4 Location discussions**

- 3.4.1.1 This section discusses each of the candidate islands to help compare the characteristics of each potential eradication location. The habitat is described, and information on current breeding seabirds provided. Where calculated, the nest site availability estimate is included. Any information on past eradication is also given.

#### **3.4.2 Alderney – Burhou**

- 3.4.2.1 Burhou Island (1.8 hectares) is the most northerly Channel Island (Sanders, 2008). It lies approximately 2.3 km northeast of Alderney. It has low rocky habitat and large amounts of short vegetation. Alderney Wildlife Trust using non-toxic bait boxes to help detect any

incursions and has reported possible rat presence (Alderney Wildlife Trust, *pers. comm.*, 2021).

3.4.2.2 Burhou is an important site for seabirds. It supports large numbers of breeding puffin, lesser lack-backed gull, shag, herring gull and storm petrel. Guillemot are not currently known to be breeding on the island (Alderney Wildlife Trust, *pers. comm.* 2021). There are historical records of Razorbills nesting (Sanders 2007), although their current breeding status is unknown, they potentially still breed in small numbers.

3.4.2.3 It is currently unknown whether Burhou can support breeding guillemot.

### **3.4.3 Alderney – Coque Lihou**

3.4.3.1 Coque Lihou is an islet south of Alderney. It is a rocky islet with vegetation which could in theory support rats over winter. However, Coque Lihou is currently rat-free, with Alderney Wildlife Trust using non-toxic bait boxes to help detect any incursions (Alderney Wildlife Trust, *pers. comm.*, 2021).

3.4.3.2 Coque Lihou is home to several breeding seabird species, including northern fulmar, shag and razorbill. Guillemot are known to breed on Coque Lihou. Exact numbers are not available, but a count of 138 guillemot rafting around the island in 2019 was assumed to provide “a fair estimate of the colony size”.<sup>6</sup>

3.4.3.3 Further work is needed to establish whether Coque Lihou could support additional breeding guillemot.

### **3.4.4 Alderney – Fourquie**

3.4.4.1 Forquie is a sea stack directly off the south coast of Alderney. Alderney Wildlife Trust confirmed that rats are present on Fourquie, and that rat eradication is currently being undertaken in partnership with the Applicant (Alderney Wildlife Trust, *pers. comm.*, 2021).

3.4.4.2 Exact ~~number~~numbers of guillemot and razorbill breeding on Fourquie are unknown (Alderney Wildlife Trust, *pers. comm.*, 2022), but a 2019 survey found that the highest number of guillemots around the Twin Sisters (i.e. Fourquie and La Nache) was three birds<sup>6</sup>. Alderney Wildlife Trust has identified currently unused habitat that is potentially suitable for guillemot that is currently being accessed by rats (*pers. comm.*, 2022).

3.4.4.3 Nest site estimates suggest suitable habitat for 114 guillemot pairs on the identified ledges.

### **3.4.5 Alderney – La Nache**

3.4.5.1 La Nache is a sea stack directly off the south coast of Alderney. Alderney Wildlife Trust confirmed that ~~blake~~black rats are present on La Nache, and that rat eradication is currently being carried out in partnership with the Applicant (Alderney Wildlife Trust, *pers. comm.*, 2021).

3.4.5.2 Exact number of guillemot and razorbill breeding on Fourquie are unknown (Alderney Wildlife Trust, *pers. comm.*, 2022), but a 2019 survey found that the highest number of guillemots around the Twin Sisters (i.e. Fourquie and La Nache) was three birds<sup>6</sup>. Alderney

---

<sup>6</sup> Alderney Wildlife Trust 2019 Seabird Summary, <https://www.alderneywildlife.org/sites/default/files/2020-05/2019%20Seabird%20Summary.pdf>, accessed November 2021

Wildlife Trust has identified currently unused habitat that is potentially suitable for guillemot which is currently being accessed by rats (*pers. comm.*, 2022).

3.4.5.3 ~~Suitable~~ Nest site estimates suggest suitable habitat for approximately 84 guillemot ~~may be pairs~~ available on La Nache, ~~based on the nest site estimates provided in this report.~~

### 3.4.6 Alderney – Le Puits Jervais

3.4.6.1 Le Puits Jervais is a small rocky islet directly off the coast of Alderney. It is not currently known whether rats are present on Le Puits Jervais, but the island has suitable habitat to support rats. Based on the distance to shore, it is highly likely rats inhabit this location.

3.4.6.2 ~~It is currently unknown whether~~ No guillemot and razorbill breed on Le Puits Jervais, however both species nested at this location historically.

3.4.6.3 Nest site estimates could not be provided due to the lack of suitable island photographs, but Alderney Wildlife Trust (*pers. comm.* 2021) provided a preliminary estimate of space for 10 pairs of guillemot.

### 3.4.7 Alderney – Hanaine Bay stack

3.4.7.1 Hanaine Bay stack is a rock stack off the Alderney coast. Rats are confirmed to be present on Hanaine Bay stack<sup>7</sup>.

3.4.7.2 ~~It is unknown whether~~ No guillemot ~~and razorbill~~ currently breed on Hanaine Bay Stack, but there is evidence of ~~auks~~ guillemot having bred there in the past (Alderney Wildlife trust, *pers. comm.*, 2021). 2022). There is currently one suspected razorbill breeding location on the stack.

3.4.7.3 Nest site ~~estimates~~ calculations for the above locations could not be provided due to a lack of information; ~~further work is needed to establish the potential number.~~ However, an initial estimate of available breeding sites for guillemot on Hanaine Bay stack, nest site estimates has been provided in Table 6.

### 3.4.8 Alderney – Rousset

3.4.8.1 Rousset is an islet off the Alderney coast. Rats are ~~not thought to be currently~~ confirmed present on the islet (Alderney Wildlife Trust, *pers. comm.*, 2022).

~~3.4.8.2 It is currently unknown whether~~ No guillemot ~~and/or~~ razorbill ~~breed on Rousset.~~

~~3.4.8.3~~ 3.4.8.2 nest on this small tidal islet and there are no records of either species doing so in the past. Nevertheless, the islet does have suitable nesting habitat for both species. Nest site ~~estimates~~ calculations for the above locations could not be provided due to ~~the~~ lack of suitable island photographs, but Alderney Wildlife Trust (*pers. comm.* 2021) provided a preliminary ~~information.~~ However, an initial estimate of space for 20 pairs, nest sites has been provided in Table 6.

### 3.4.9 Alderney – L'Etac de la Quoire

3.4.9.1 L'Etac de la Quoire is a steep rocky island near the southeast coast of Alderney. Although the islet has vegetation and could therefore support rats over winter, Quoire is currently rat-

<sup>7</sup> Alderney West Coast and Burhou Islands Ramsar Site Annual Review: 2018.



free and is under a preventative eradication control programme (Alderney Wildlife Trust, pers. comm., 2021).

3.4.9.2 ~~Razorbill~~ Two razorbill nests (perhaps up to 5, inferred from the number of birds present earlier) currently breed on L'Etac de la Quoire (Alderney Wildlife Trust, pers. ~~comm.~~, exact numbers are not reported. comm., 2022). No guillemot have been recorded to nest here.

3.4.9.3 Ledge space for 90 guillemot pairs was calculated to be available in the nest site estimates.

### 3.4.10 Guernsey – Jethou and Grande Fauconniere

3.4.10.1 Jethou is a small, inhabited island in between Herm and Guernsey which has confirmed brown rat presence. Connected at low tide is Grande Fauconniere ~~is~~, a small islet just off the south coast of Jethou. ~~It has vegetation, suggesting the island could support rats over winter.~~ Due to its proximity to Jethou as well as Herm (within 1 km), there is potential for rats to move between these islands and Grande Fauconniere. Any predator eradication programme would therefore likely have to target these islands together.

~~3.4.10.2~~ ~~No public seabird survey data is available for~~ guillemot or razorbill currently breed on Grande Fauconniere and Jethou, but ~~the following anecdotal~~ there is recent evidence suggests the presence of at least these species:

• ~~3.4.10.2~~ ~~One razorbill (in~~ Razorbill nesting on Grande Fauconniere (2020 survey, Bailiwick of Guernsey ecology team, pers. comm.; comm., 2021), along with numerous other seabirds nesting across Jethou and Herm.

- ~~Over 30 shag (in 2010).~~<sup>8</sup>
- ~~Low numbers of herring gull (in 2012).~~<sup>8</sup>

3.4.10.3 The August 2021 preliminary site visits identified a number of ledges suitable for guillemot nesting ~~on Grande Fauconniere~~. Nest site estimates suggest potential space for 78 guillemot pairs across these ledges. Nest site calculations for Jethou could not be provided due to a lack of information gathered during the site visit. However, an initial estimate of nest site estimates has been provided in Table 6.

### 3.4.11 Guernsey - Herm (SW)

3.4.11.1 Herm is the largest island within the Bailiwick of Guernsey. It is 199 hectares in size, and home to approximately 62 people. Herm lies within 1 km of Jethou and Grande Fauconniere; due to their proximity any eradication programme would therefore likely have to target these islands together. The study by Stanbury *et al.* (2017), prioritised UK islands according to the benefits that invasive mammal eradication would bring to 66 of the most significant and threatened species, including guillemot and razorbill, vulnerable to invasive species impacts. ~~and~~ Herm was ranked 25<sup>th</sup> out of 9688 considered islands.

3.4.11.2 Weather restrictions and logistical issues meant that Herm was not ~~visited and~~ photographed by boat. Nest site estimates using the methodology in [Section 3.3.2](#) could therefore not be completed for this site. Some potentially suitable rocky cliff habitat for guillemot ~~appears to~~ is present on the southwest of Herm ([Figure 6](#)); the full ~~feasibility~~ predator eradication implementation study ([Section 5](#)) will need to determine whether additional sites for guillemot and razorbill are likely to be present. No guillemot or razorbill were found during the Applicant's 2022 seabird census of the area (see G5.4

<sup>8</sup> ~~Guernsey Gulls blog, <http://guernseygulls.blogspot.com/>, accessed November 2021.~~



**Predator Eradication Implementation Update** for further details on the seabird census (submitted at Deadline 5).



Figure 6: Southwest Herm.

### 3.4.12 Guernsey – The Humps

3.4.12.1 The Humps consist of small rocky islets and several sandbanks located northeast of Herm (Figure 7). Several of the islets have vegetation to support rats over winter. No information on recent rat presence on the Humps was found. ~~Rat presence would therefore need to be assessed as part of a full feasibility study, although the locations are within rat swimming range from Herm.~~ Stanbury et al. (2017) stated that both brown and black rats are present on nearby Herm.

3.4.12.2 ~~Full~~ A seabird ~~survey data for The census was undertaken of the Humps was not available, by the Applicant in 2022 (see G5.4 Predator Eradication Implementation Update for further details on the seabird census (submitted at Deadline 5), but Auk species are known to breed on several of the islets; the following counts were recorded: Godin, (two guillemot and four razorbill), Galeu, (five razorbill), Longue Pierre (141 guillemot and 14 razorbill) and Grande Amfroque have breeding razorbill, and Long Pierre supports a population of 50-70 guillemot (Channel Islands Gov, pers. comm.); (one razorbill).~~ Other seabirds, such as cormorant, shag and great black-backed gull also breed on the islets<sup>9,10</sup>.

3.4.12.3 Weather restrictions and logistical issues meant that The Humps could not be visited and photographed by boat during the visit in summer 2021. Nest site estimates using the methodology in Section 3.3.2 could therefore not be completed for this site. ~~Additional~~

<sup>9</sup>-Guernsey Gull ringing blog: <http://guernseygulls.blogspot.com/2010/06/few-more-great-black-backed-gull-chicks.html?m=1> Accessed December 2021.

<sup>10</sup> Guernsey Gull ringing news: <http://guernseygulls.blogspot.com/2011/05/seabird-season-commences.html>; Accessed December 2021.

~~space for guillemot on The Humps will be surveyed~~ However, an initial estimate of nest site availability has been provided in ~~the full feasibility study in 2022 (Section 5)-Table 6.~~



**Figure 7: Islets within The Humps.**



**Figure 7: Islets within The Humps.**

### **3.4.13 — Sark – Grand Moie**

#### **3.4.13 Grand and Petite Moie is**

3.4.13.1 Grand Moie and Petite Moie are located off the east coast of Sark. ~~It has~~ Both islands have vegetation which could support rats over winter. ~~No information on current~~ Both locations are within rat ~~presence on Grand Moie could be found, but anecdotal online evidence~~

~~suggests the presence~~ swimming distance of ~~rats on~~ Sark<sup>11</sup>, which is ~~less than 200 m away from Grand Moie.~~ confirmed to support rats

~~3.4.13.2 No public~~ No guillemot and one razorbill were recorded by the Applicant's 2022 seabird survey data is available for Grand Moie so bird diversity and abundance on ~~sensus of the island is not known, but the following anecdotal evidence suggests the presence of:~~

• 3.4.13.2 area. However, 45 razorbill and no guillemot ~~(were observed in a 2020 survey,)~~ (Bailiwick of Guernsey ecology team, pers. comm., 2021).

- Low numbers of lesser black-backed and herring gull<sup>12</sup>.

3.4.13.3 The August 2021 preliminary site visit showed availability of cliff habitat potentially suitable for nesting guillemot. Due to a lack of data on island height, nest site availability could not be quantified, but 11 potentially suitable ledges were identified (**Figure 8**). If it were crudely assumed that these ledges are on average 1 m long, this would suggest breeding space for approximately 132 ~~individuals~~ pairs (see **Section 3.3.2.1** for calculation methodology). However, Grand Moie is made up of several stacks and islets (**Figure 9**), suggesting there is large amounts of rocky cliff habitats not visible on the photo, so more breeding space may well be available. ~~This could be confirmed in a full feasibility study.~~ Nest site calculations for Petit Moie could not be provided due to a lack of information gathered during the site visit. However, an initial estimate of nest site estimates has been provided in **Table 6**.



**Figure 8: Potentially suitable Guillemot breeding sites (pink) on Grand Moie.**

<sup>11</sup> Small Mammal Group – Black Rat, <https://www.smallmammalgroup.com/mammal-of-the-month/black-rat>, accessed November 2021.

<sup>12</sup> Gull Breeding Sites in the Bailiwick of Guernsey, <https://web.archive.org/web/20160304112807/http://www.paulveron.com/gullbreeding%20sites%20-%20burhou.html> (archived site accessed November 2021).





Figure 9: Grand Moie. Source: Google Earth [Accessed November 2021].

### 3.4.14 Sark – Les Autelets

3.4.14.1 Les Autelets (Figure 10) is a steep rock stack Northwest of Sark. It has only a small patch of vegetation. Whilst nearby Sark is thought~~known~~ to support rats<sup>13</sup>, it is uncertain whether Les Autelets can support a rat population due to its steep topography.

3.4.14.2 Les Autelets has the largest guillemot population of the Channel Islands, estimated at ~~235 guillemot in 2015<sup>13,14</sup>. The presence and numbers of other bird species on Les Autelets is unknown.~~ 190 guillemot and two razorbill during the Applicant's 2022 seabird census..

3.4.14.3 Weather restrictions and logistical issues meant that Les Autelets was not visited and could only be photographed by from a boat. Nest site estimates using the methodology in Section 3.3.2 could therefore not be completed for ~~this~~ the full site. ~~As~~ However, a photograph of part of Les Autelets (Figure 11) was used to illustrate the extensive seabird habitat available on the stack. On the section of the stack photographed, large rock platforms seemingly suitable for guillemot and razorbill nesting are present. Using Google Earth<sup>14</sup> to estimate the dimensions (width and length) of the stack, it was estimated that the photograph shows a nesting surface area of at least 13.6m<sup>2</sup> (Figure 11). Using a nesting density of 20 pairs/m<sup>2</sup>, this would thus provide nesting space for 272 pairs of guillemot or razorbill within the

<sup>13</sup> <https://app.bto.org/seabirds/public/data.jsp>

<sup>14</sup> Google Earth 9.159.0.0. <https://earth.google.com/>, accessed April 2022

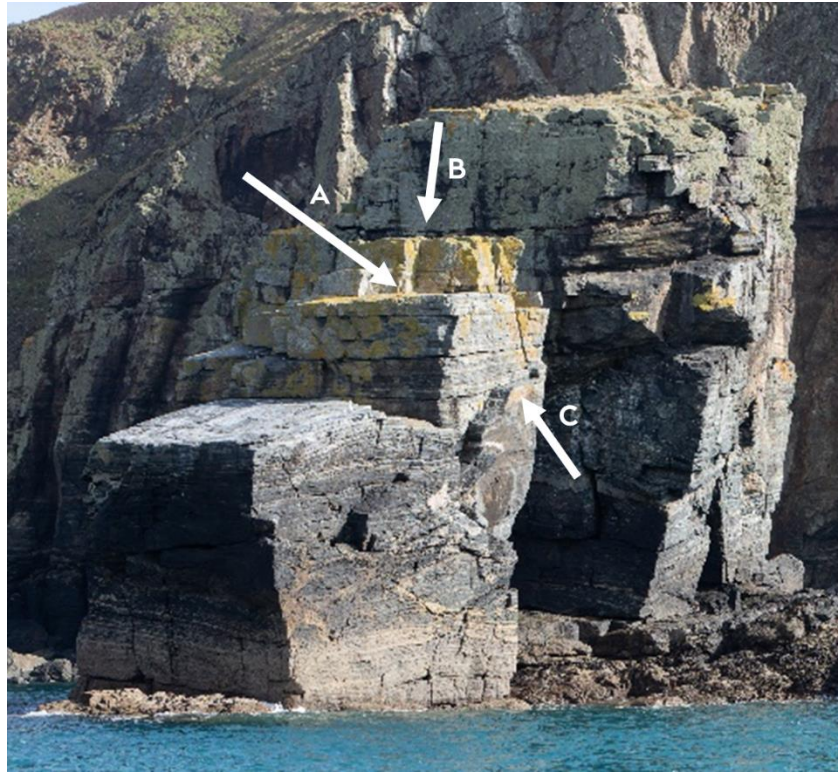
sections photographed, with total nest site availability on the entirety of Les Autelets thus likely substantially higher.

~~3.4.14.3~~3.4.14.4 However, as Les Autelets already supports large populations of seabirds it is currently unknown how much additional space for guillemot may be present. A full breeding bird survey and nest site availability assessment will be needed to establish this.



**Figure 10: Les Autelets.**





**Figure 11: Suitable cliff habitat for guillemot nesting on Les Autelets. Based on inference of dimensions of the islet on Google Earth, platform A, B and C are approximately 12m<sup>2</sup>, 1m<sup>2</sup> and 0.6m<sup>2</sup> in size. In total, this section of Les Autelets could provide habitat for 272 guillemot (based on a breeding density of 20 birds/m<sup>2</sup>).**

### 3.4.15 Sark – L'Etac de Sark

3.4.15.1 L'Etac de Sark is a small islet situated several hundred meters south of Sark. It consists of a mix of steep grassy slopes and rocky boulders. It has vegetation which could support rats over winter. ~~No information could be found on rat presence on L'Etac de Sark, but rats~~ Rats are present on nearby Sark<sup>14</sup>, and are therefore likely to be present

3.4.15.2 ~~Comprehensive for the Applicant recorded no guillemot breeding bird data is not available for on L'Etac de Sark in 2022, but anecdotal evidence did recorded six razorbill.~~ Furthermore, local recent sightings suggests the island is home to ~~breeding guillemot as well as razorbill~~, shag, puffin and small numbers of great black-backed, lesser black-backed and herring gull<sup>12,15</sup>.

3.4.15.3 The site visit showed the availability of cliff habitat potentially suitable for nesting guillemot. Due to a lack of data on island height, nest site availability could not be quantified, but three small potential ledges were identified (Figure 12). If it were crudely assumed that these ledges are on average 0.5m long, this would suggest breeding space for approximately 18 guillemot pairs (see Section 3.3.2 for calculation methodology). ~~An~~ an additional close-up photo of part of the island, a further 3.5m of suitable ledge length is identified, providing habitat for approximately 24 pairs within that section of the islet. Adding this to the estimate from the full ~~feasibility~~ island photograph gives an approximate total site availability of 42 pairs. A full predator eradication implementation

<sup>15</sup> The Sark Society – Ornithology, <https://www.socsercq.org/ornithology>, accessed November 2021

study will be ~~needed~~undertaken to quantify the ~~exact~~estimated number of breeding guillemot that could breed across the island.



Figure 12: Potentially suitable guillemot breeding sites (denoted by the pink lines) on ~~L'Etac~~L'Etac de Sark.



Sark

Figure 13: Potentially suitable guillemot breeding sites (denoted by the pink lines) on a section of L'Etac de Sark



### 3.4.16 Sark – Little Sark

- 3.4.16.1 Little Sark is not a separate island, but rather a peninsula at the southern section of Sark. Sark is 545 hectares in total. Little Sark is joined to the larger part of the island by a narrow isthmus (a ridge 80 m high, 3 m wide), therefore there is the potential for rats to easily move between. Sark and Little Sark have large amounts of vegetation to support rats, and rats ~~were~~are confirmed to be present.<sup>11</sup> No record of past eradication projects was found.
- 3.4.16.2 Surveys in 2015 recorded 16 guillemot and seven razorbill on Little Sark; ~~however, none were recirded during the Applicant's 2022 census.~~ The area also supports large numbers of herring gull and lesser black-backed gull (210 and 74 birds recorded respectively). Smaller numbers of shag, petrel, great black-backed gull and puffin have also been reported in recent years.
- 3.4.16.3 Weather restrictions and logistical issues meant that Little Sark was not ~~visited and~~ photographed by boat. Nest site estimates using the methodology in [Section 3.3.2](#) could therefore not be completed for this site. The full feasibility predator eradication implementation study ([Section 5](#)) will need to investigate whether additional guillemot breeding space is available; ~~however, true islands and islets, rather than peninsulas, are the preferred option in terms of location for an eradication.~~

### 3.4.17 **Summary table**

- 3.4.17.1 [Table 6](#) below summarises the relevant information for predator eradication site selection from the habitat suitability analysis ([Section 3.3.3](#)) and location discussions ([Section 3.4](#)). The table provides an overview of the following: Location: island or islet of interest; Guillemot (Guil.) habitat: whether the site contains rocky cliff habitat seemingly suitable for nesting guillemot; Vegetation: whether the island contains vegetation to support rats over winter; Eradication history: any past or current eradication projects ~~(when "yes", most recent available information was from 2017, see Heaney and St Pierre 2017), rats;~~ Rats confirmed present: whether rats have been recorded on the island (TBC if uncertainty remains and will be surveyed in the ~~feasibility study), could~~ predator eradication implementation study); Could support rats: whether the island is deemed likely to be able to support rats (sources added as footnotes); Guil. ~~no~~ No: current numbers of guillemot (see main text for sources) (HE: historic evidence of species nesting at location; TBC: To be confirmed as part of the ~~feasibility~~ predator eradication implementation study); Guil. ~~nest~~ Nest site estimate (pairs): potential available nesting space estimated for guillemot pairs in this report (see main text for details) (TBC: To be confirmed as part of the ~~feasibility~~ predator eradication implementation study).

**Table 6: Table summarising island characteristics relevant for predator eradication site selection.**

Location	Guil. habitat Habitat	Vegetation	Eradication history	Rats confirmed present	Could support rats	Guil. no. (INDV)	Guil. Nest site estimate (pairs)
<i>Alderney</i>							
Burhou	✓	✓	Ongoing	✓ <sup>16</sup> ✓#	✓ <sup>15</sup> ✓	0	TBC <sup>16</sup> TBC
Coque Lihou	✓	✓	Ongoing	X <sup>15</sup> X#	✓ <sup>15</sup> ✓	138	TBC <sup>16</sup> TBC
Fourquie	✓	✓	Ongoing	✓ <sup>15</sup> ✓#	✓ <sup>15</sup> ✓	3	114
La Nache	✓	✓	Ongoing	✓ <sup>15</sup> ✓#	✓ <sup>15</sup> ✓		84
Le Puits Jervais	✓	✓	None	TBC <sup>17</sup> ✓✓##	✓ <sup>15</sup> ✓	HE <sub>0</sub>	10*
Hanaine Bay stack	✓	✓	Ongoing	✓ <sup>15,18</sup> ✓#	✓ <sup>15</sup> ✓	TBC <sup>16</sup> 0	TBC <sup>16</sup> 10**
Rousset	✓	✓	Ongoing	X <sup>15</sup> ✓#	✓ <sup>15</sup> ✓	TBC <sup>16</sup> 0	20*
L'Etac de la Quoire	✓	✓	Ongoing	X <sup>15</sup> X#	✓ <sup>15</sup> ✓	0	90
<i>Guernsey</i>							
Jethou	✓	✓	None	✓#	✓	0	30**
Grande Fauconniere	✓	✓	None	X✓✓##	✓ <sup>19</sup>	0	78
Herm (SW)	✓	✓	None	✓✓#	✓	TBC <sub>0</sub>	TBC <sub>10</sub> **
The Humps	✓	✓	None	X✓✓##	✓	50+ <sup>20</sup> 143	TBC <sub>200</sub> **
<i>Sark</i>							
Grand Moie	✓	✓	None	X✓✓##	✓	0	132 <sup>21</sup>
Burons	✓	✓	None	✓✓##	✓	317	400**
Petite Moie	✓	✓	None	✓✓##	✓	0	55**
Les Autelets	✓	✓	None	X##	? <sup>22</sup>	235190	TBC <sub>272</sub>
L'Etac de Sark	✓	✓	None	X <sup>23</sup> ✓✓##	✓	TBC <sub>0</sub>	18 <sup>24</sup> 75**
Little Sark	✓	✓	None	✓✓#	✓	16 <sub>0</sub>	TBC
La Grune & Bec du Nez	✓	✓	None	✓✓##	✓	0	25**

\*Estimate

# Confirmed by site managers or predator eradication implementation study.

## Determined likely by site managers or predator eradication experts based on distance from known rat population and accessibility.

\* Based on expert opinion provided by Alderney Wildlife Trust.

\*\* Preliminary estimate based on review of Google Earth and internet search images. Assessment will be updated where high-resolution photographs of possible following further data collection by the islets were not available. eradication implementation study.

<sup>16</sup> Alderney Wildlife Trust, pers. comm. (2021)

<sup>17</sup> Currently unknown. Work planned by Orsted and the Alderney Wildlife Trust to gather evidence

<sup>18</sup> Alderney West Coast and Burhou Islands Ramsar Site Annual Review: 2018

<sup>19</sup> Ratcliffe et al. (2009) stated that rats are present on Herm and Jethou, it is therefore here assumed that rat presence is likely on nearby Grande Fauconniere

<sup>20</sup> 50-70 guillemot nest on Longue Pierre, numbers unknown for other islets within The Humps

<sup>21</sup> Likely to be an underestimate, see **Section 3.4.13**

<sup>22</sup> It is uncertain whether Les Autelets can support rats due to its steep topography

<sup>23</sup> Anecdotal evidence suggests rats are present on nearby Sark (Small Mammal Group – Black Rat, <https://www.smallmammalgroup.com/mammal-of-the-month/black-rat>, accessed November 2021)

<sup>24</sup> Estimate only, see **Section 3.4.15**

## 4 Improving predator eradication success

4.1.1.1 A wide range of factors may affect guillemot recruitment and success following predator eradication. Various techniques could be considered as part of an eradication package as adaptive management to further improve breeding numbers.

### 4.2 Artificial ground cover

4.2.1.1 Guillemot nests are susceptible to avian predation. In a study on a breeding colony in California, Parrish and Paine (1996) showed that areas with artificial covers installed over the cliff tops produced nearly twice as many eggs. Artificial ground cover could thus be considered as an additional measure following predator eradication, to further increase breeding performance at potential cliff-top breeding sites.

### 4.3 Decoys and playbacks

4.3.1.1 Social attraction methods, such as playbacks and decoys, can be used to increase the likelihood of recruitment, and has shown to be highly effective in a past study by Parker *et al.* (2007). Breeding guillemot were lost from a colony in California following an oil spill in 1986 and did not naturally recolonise over the following eight years. In January 1996, Parker *et al.* (2007) installed guillemot decoys, playbacks and mirrors to attempt to attract guillemot. No guillemot were observed before these social attraction techniques were installed. Following social attraction installation, birds were seen on all but two days (observations were carried out until the post-fledging period in August). Over 90% of 68,332 guillemot observations was in decoy plots vs. less than 10% in control plots and outside of study plots. Guillemot started breeding on the site during the 1996 breeding season, and numbers increased from 1996 (6 pairs) to 2004 (190 pairs) with continued but decreased use of the social attraction techniques (Parker *et al.* 2007).

### 4.4 Simulated guano

4.4.1.1 In other seabird species, white paint has been used to simulate guano at potential breeding sites (Gummer, 2003; Sawyer and Fogle, 2013). This could be used for guillemot, potentially alongside the use of decoys and playbacks, with the aim of increasing colonization rates following rat eradication.

### 4.5 Invasive plant removal

4.5.1.1 Several of the islands have sour fig *Carpobrotus edulis*, an invasive creeping succulent which grows over boulders, providing habitat for rats and potentially reducing available nesting space for breeding seabirds. Removal of sour fig could increase breeding habitat availability for guillemot (and razorbill) and could therefore be considered alongside predator eradication to maximise gains.

## 5 Next steps – ~~feasibility~~ predator eradication implementation study

5.1.1.1 A full ~~feasibility~~ predator eradication implementation study including surveys ~~will be~~ has been initiated ~~in early 2022. This work will include~~ by the Applicant and includes :

- Surveying of all candidate islands for the presence of invasive mammalian predators, including abundance estimates.
- Collecting evidence of predation pressures, such as egg caches and gnawed carcasses ~~-(using camera traps)~~. This survey could also include collecting camera evidence ~~and stable isotope testing of predator tissues. of where/whether rats~~ accessing selected (potential) breeding ledges.

- Assessing the amount of potential nest habitat for each island, including data on current colony usage and potential nesting space.
- Full guillemot and razorbill breeding bird census for each island, providing a baseline for future population and productivity assessments.

5.1.1.2 For Guernsey and Sark, this ~~feasibility~~eradication implementation study ~~will be~~has been undertaken by international eradication experts. For Alderney, experienced site managers with significant expertise in ornithology have undertaken the predator eradication implementation study. The Final Implementation Study Report is expected to be completed in the autumn following the breeding bird surveys and in 2022 further information gathering and will also report on these feasibilitythe following criteria ~~following~~based on the UK Rodent Eradication Best Practice Toolkit (Thomas *et al.* (2017):

- Technically feasible;
- Sustainable;
- Socially acceptable;
- Politically and legally acceptable;
- Environmentally acceptable;
- Capacity; and
- Affordable.

5.1.1.3 Results of the predator eradication implementation study are presented within **G5.4: Predator Eradication Implementation Study Update**, submitted by the Applicant at Deadline 5.

## 6 References

- Anderson, H.B., Evans, P.G.H., Potts, J.M., Harris, M.P. and Wanless, S., (2013), The diet of Common Guillemot *Uria aalge* chicks provides evidence of changing prey communities in the North Sea', *Ibis*, 1: 23-34.
- Balmer, D.E., Gillings, S., Caffrey, B.J., Swann, R.L., Downie, I.S. and Fuller, R.J., (2013), 'Bird Atlas 2007-11: the breeding and wintering birds of Britain and Ireland', (Thetford: BTO Books).
- Birdlife International (2021), 'Species factsheet: *Uria aalge*'. <http://datazone.birdlife.org/species/factsheet/common-murre-uria-aalge/>, Birdlife International [accessed November 2021].
- Birkhead, T.R. (1976), 'Breeding biology and survival of Guillemots (*Uria aalge*)'. PhD Thesis.
- Birkhead, T.R. (1977), 'The effect of habitat and density on breeding success in the Common Guillemot (*Uria aalge*)'. *Journal of Animal Ecology*, 46: 751-764.
- Birkhead, T.R. (2010), 'Great Auk islands; a field biologist in the arctic', (London: T & A D Poyser).
- Booker, H., Slader, P., Price, D., Bellamy, A.J. and Frayling, T. (2018), 'Cliff nesting seabirds on Lundy: Population trends from 1981 to 2017', *Journal of the Lundy Field Society*, 6: 1-12.
- Ellis, J.R., Milligan, S.P., Readdy, L., Taylor, N. and Brown, M.J. 'Spawning and nursery grounds of selected fish species in UK waters.' Scientific Series Technical Report no. 147, (Lowestoft: Cefas).
- Gaston, A.J. and Jones, I.L., (1998), 'The Auks Alcidae'. (Oxford: Oxford University Press).
- Gummer, H., (2003), 'Chick translocation as a method of establishing new surface-nesting seabird colonies: a review', DOC Science Internal Series 150, Department of Conservation, Wellington.
- Harris, M.P. and Birkhead, T.R., (1985), 'Breeding ecology of the Atlantic Alcidae'. In D.N. Nettleship and T.R. Birkhead (eds.), *The Atlantic Alcidae* (London: Academic Press).
- Halley, D.J., Harris, M.P. and Wanless, S., (1995), 'Colony attendance patterns and recruitment in immature Common Murres (*Uria aalge*)', *Auk*, 87: 244-254.
- Harris, M.P. and Wanless, S., (1987), 'The breeding biology of Guillemots *Uria aalge* on the Isle of May over a six year period', *Ibis*, 130: 172-192.
- Harris, M.P., Wanless, S. and Barton, T.R., (1996), 'Site use and fidelity in the Common Guillemot *Uria aalge*', *Ibis*, 138: 399-404.
- Harris, M.P., Wanless, S., Barton, T.R. and Elston, D.A., (1997), 'Nest site characteristics, duration of use and breeding success in the Guillemot *Uria aalge*', *Ibis*, 139: 468-476.
- Heaney, V., Lock, L., St Pierre, P. and Brown, A., (2008), 'Important Bird Areas: Breeding seabirds on the Isles of Scilly', *British Birds*, 101: 418-438.
- Heaney, V. and St Pierre, P., (2017), 'The status of seabirds breeding in the Isles of Scilly 2015/16'. Available at:

<http://publications.naturalengland.org.uk/publication/6517450827104256> [Accessed November 2021].

Hipfner, J.M. and Dussureault, J., (2001), '~~The~~The occurrence, size, and composition of Razorbill Nest ~~Structures~~Structures', *The Wilson Bulletin*, 113: 445-448.

Isles of Scilly Wildlife Trust, (2021), Norrad Rocks, Available at: <https://www.ios-wildlifetrust.org.uk/norrad-rocks> [Accessed September 2021].

JNCC (2020), '~~Seabird~~Seabird Population Trends and Causes of Change: 1986-2018 ~~Report~~Report', <https://jncc.gov.uk/our-work/smp-report-1986-2018> Joint Nature Conservation Committee. Updated 10 March 2020. [Accessed November 2021].

Lyngs, P., (1993), '~~Colony~~Colony interchange in Baltic guillemots *Uria ~~ealge~~aalge*', *Dansk Ornitologisk Forenings Tidsskrift*, 87: 247-250.

McKeown, N.K., Carpi, P., Silva, J.F., Healey, A.J.E., Shaw, P.W. and van der Kooij, J., (2020), '~~Genetic~~Genetic population structure and tools for the management of European sprat (*Sprattus sprattus*)', *ICES Journal of Marine Science*, 77: 2134-2143.

Natural England Technical Information Note TIN123 (2012), '~~Common~~Common guillemot: species information for marine Special Protection Area ~~consultations~~consultations'. <http://publications.naturalengland.org.uk/>. [Accessed November 2021].

Parker, M.W., Kress, S.W., Golightly, R.T., Carter, H.R., Parsons, E.B., Schubel, S.E., Boyce, J.A., McChesney, G.J. and Wisely, S.M., (2007), '~~Assessment~~Assessment of social attraction techniques used to restore a Common Murre colony in central California', *Waterbirds: The International Journal of Waterbird Biology*, 30:17-28.

Parrish, J.K. and Paine, R.T., (1996), '~~Ecological~~Ecological interactions and habitat modification in nesting Common Murres *Uria ~~ealge~~aalge*', *Bird Conservation International*, 6: 261-269.

Pawson, M.G., (1995), '~~Biogeographical~~Biogeographical identification of English Channel fish and shellfish ~~stocks~~stocks', Fisheries Research Technical Report Number 99 (Lowestoft, Ministry of Agriculture, Fisheries and Food — directorate of fisheries research).

Plumb, W.J., (1665), '~~Observations~~Observations on the breeding biology of the ~~Razorbill~~Razorbill', *British Birds*, 58: 449-456.

Ratcliffe, N., Mitchell, I., Varnham, K., Verboven, N. and Higson, P., (2009), '~~How~~How to prioritize rat management for the benefit of petrels: a case study of the UK, Channel Islands and Isle of ~~Man~~Man', *Ibis*, 151: 699-708.

Sanders, J.G., (2008), '~~Fish~~Fish brought to young Atlantic Puffins *Fratercula arctica* on Burhou, Channel ~~Islands~~Islands', *Seabird*, 21: 105-107.

Sawyer, S.L., (2013), '~~Establishment~~Establishment of a new breeding colony of Australasian gannets (*Morus serrator*) at Young Nick's Head ~~Peninsula~~Peninsula', *Notornis*, 60: 180-182.

Stanbury, A., Thomas, S., Aegerter, J., Brown, A., Bullock, D., Eaton, M., Lock, L., Luxmoore, R., Roy, S., Whitaker, S. and Oppel, S., (2017), '~~Prioritising~~Prioritising islands in the United Kingdom and crown dependencies for the eradication of invasive alien vertebrates and rodent biosecurity', *European Journal for Wildlife Research*, 63.

Thibault, J., (1993), '~~Natal~~Natal philopatry in the Cory's Shearwater (*Calonectris d. diomedea*~~39~~diomedea) on Lavezzi Island, *Corsica*~~'Corsica'~~'Corsica', *Colonial Waterbirds*, 16: 77-82.

Thomas, S., Varnham, K. and Havery, S., (2017), 'Current Recommended Procedures for UK (bait station) rodent eradication projects. (Version 4.0)', (Sandy: Royal Society for the Protection of Birds).

~~van~~Van der Kooij, J., Capuzzo, E., Silva, J. and Symes, N., (year unknown), '~~PELTIC14~~PELTIC14: Small pelagic fish in the coastal waters of the western Channel and Celtic Sea.' CEND20\_14 Cruise report.

Veron, M. and Veron, C. (2016), '~~Seabird~~Seabird Count 2015; monitoring the status of Guernsey's ~~Seabirds~~Seabirds'. *La Société Guernesiaise Transactions*, XXVII: 78-87.



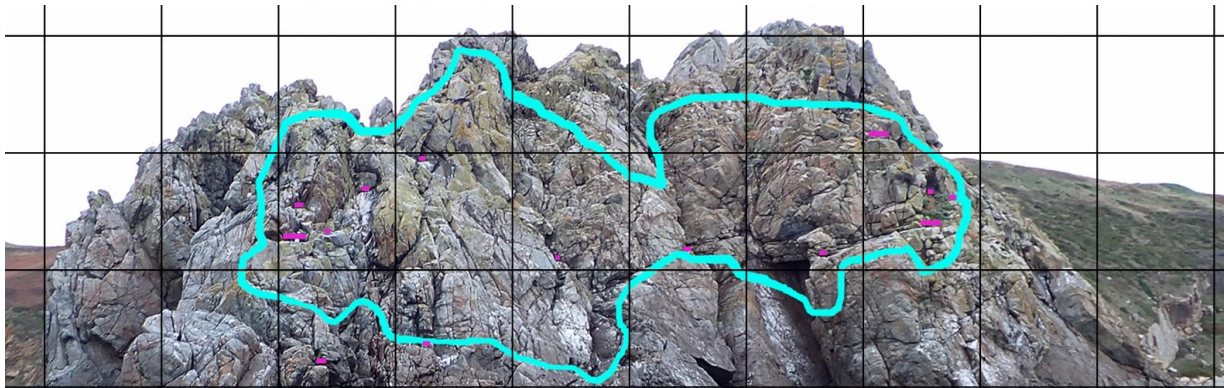
## Appendix A Nesting space images

### 1 Introduction

1.1.1.1 The photographs below show the areas of the assessed islands deemed potentially available for ~~Guillemot~~ guillemot nesting. Suitable nesting ledges and platforms are marked in pink and blue respectively. A 5 m measurement grid is superimposed on each image. Where the image had to be split to fit on the page, a yellow dashed line denotes where the image has been split.

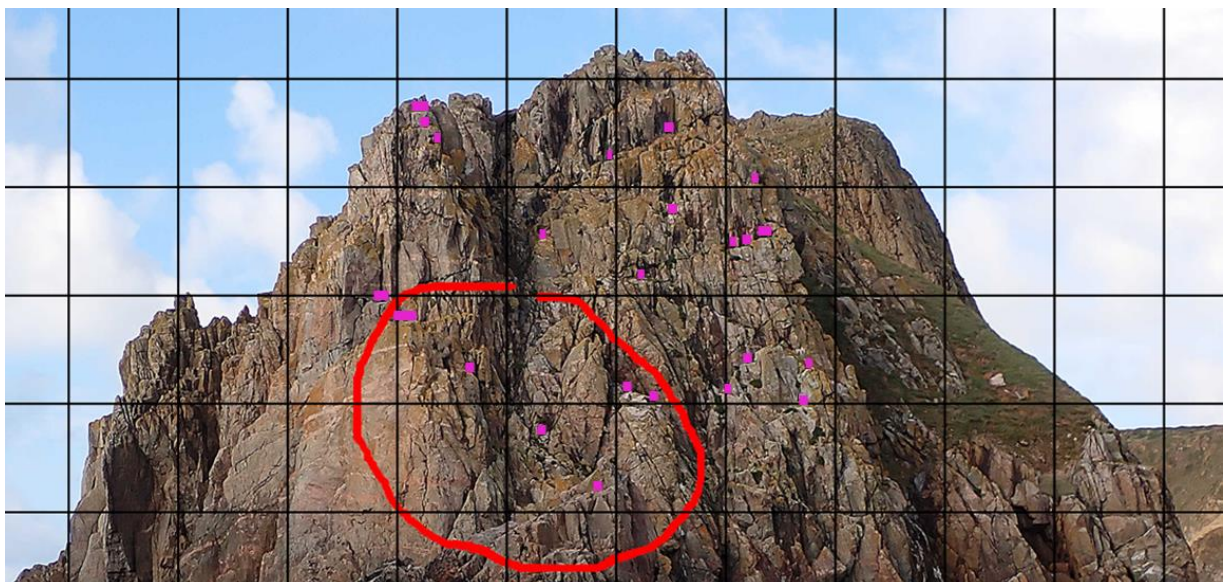
### 2 Alderney – L'Etac de la Quoire

2.1.1.1 Suitable nesting ledges are marked in pink. The area circled in blue was highlighted by Alderney Wildlife Trust as suitable nesting habitat for guillemot and razorbill (*pers. comm.*, 2022) prior to the detailed habitat analysis.

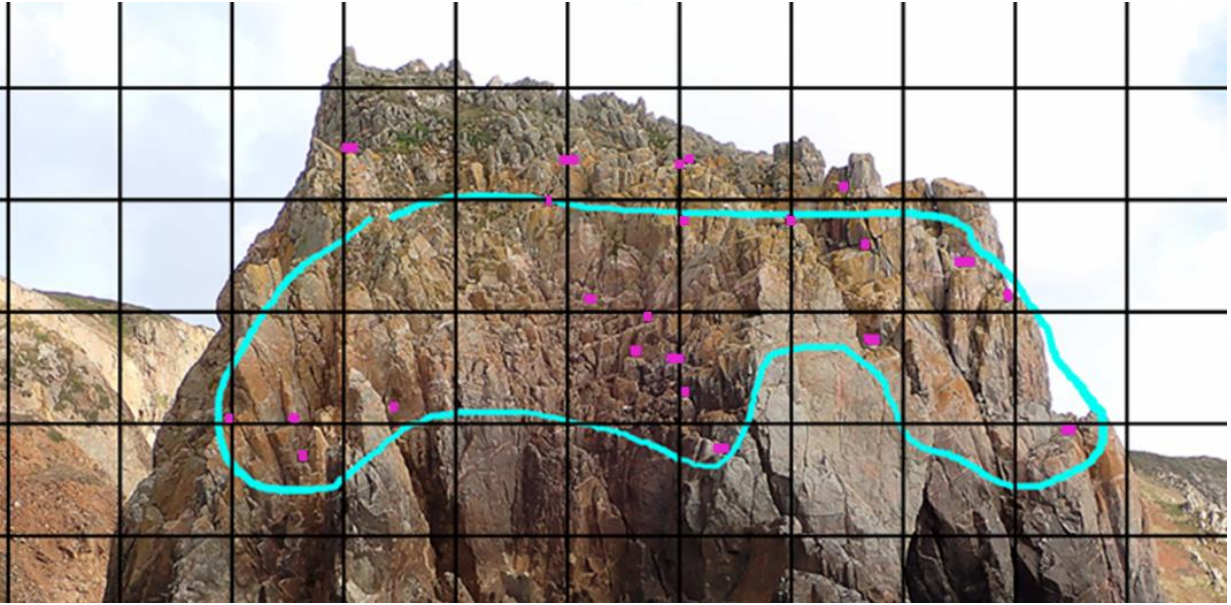


### 3 Alderney – Forquie

3.1.1.1 Suitable nesting ledges are marked in pink. Razorbill are thought to use the area marked in red (Alderney Wildlife Trust, *pers. comm.*, 2022). The area circled in blue was highlighted by Alderney Wildlife Trust as suitable nesting habitat for guillemot and razorbill (*pers. comm.*, 2022) prior to the detailed habitat analysis.

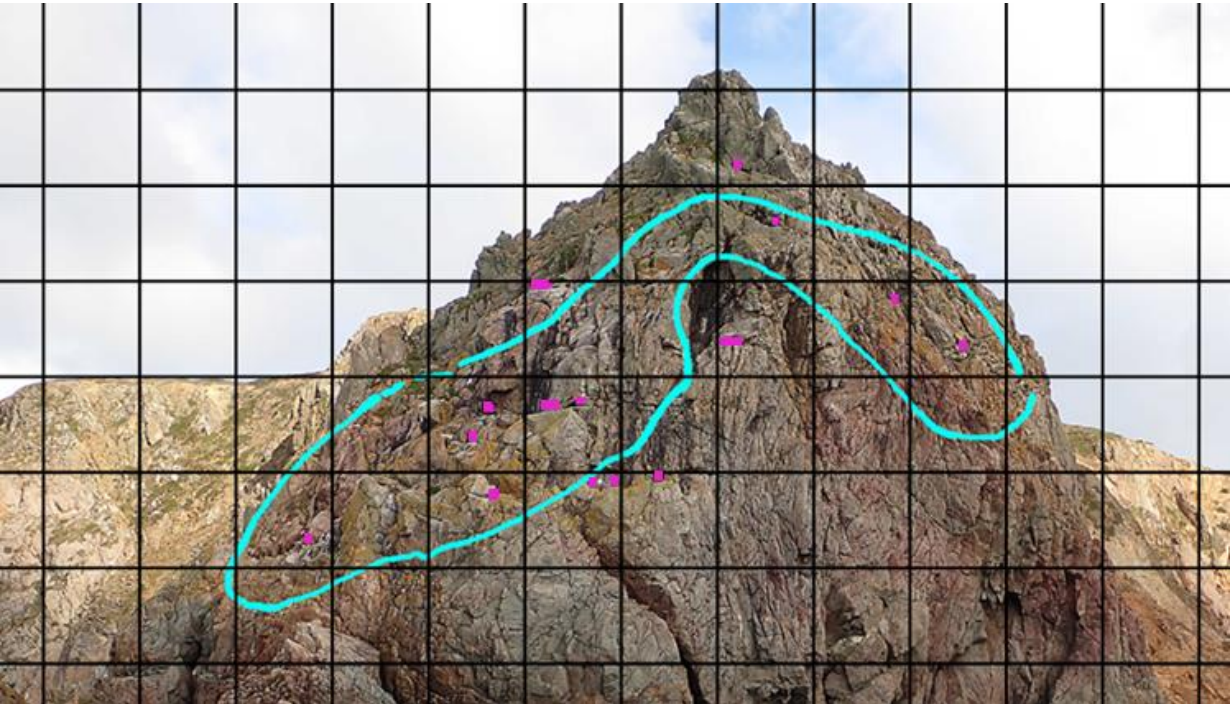






#### 4 Alderney – La Nache

4.1.1.1 Suitable nesting ledges are marked in pink. The areas circled in blue were highlighted by Alderney Wildlife Trust as suitable nesting habitat for guillemot and razorbill (*pers. comm.* [2022](#)) prior to the detailed habitat analysis.





## 5 Grande Fauconniere

5.1.1.1 Suitable nesting ledges and platforms are marked in pink and blue respectively.

